

# HOW REACTIVE ATTACHMENT DISORDER (RAD) IMPACTS A FAMILY

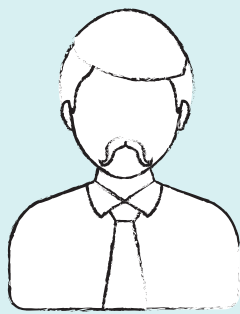
## Child with RAD



Kids with RAD have brains wired from fear and are in fight/flight mode. They control others to feel in charge and safe and push away those who get closest to them. People outside of the family are typically unaware of these behaviors.

### Dad

(or another non-primary caregiver)



The child with RAD typically charms Dad and leads him to believe that Mom is unreasonable.

The RAD behaviors with Mom and Dad puts a strain on their relationship, and therefore, the whole family.

### Mom

(or another primary caregiver)



The child with RAD goes to great lengths to push away Mom, often via triangulation and manipulation. Many moms say they "feel crazy" because no one else sees or experiences the same RAD behaviors as she does.

## Other Children

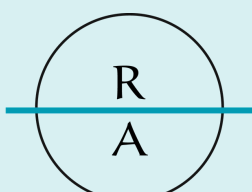
As Mom is preoccupied with the child with RAD, she is often unable to attend the extracurricular activities of other children in the home. Siblings of kids with RAD are also impacted by Mom's mental state in dealing with the stress RAD causes in the family. Their own mental wellness and physical safety are also often compromised as well by RAD behaviors.

## Pets

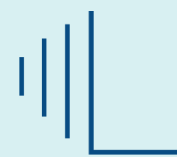
Kids with RAD often try to control pets (as they also often do with younger siblings). If the animal nips or scratches in response, the child with RAD may harm the animal.

Everyone need support when living with RAD, not just the disordered child. #navRAD21

Brought to you by:



RAD ADVOCATES



L I F E S P A N  
TRAUMA CONSULTING